



# ANNUAL EMPLOYMENT REPORT

SPRING 2024 // [CVTC.EDU](http://CVTC.EDU)

DATA COMPILED AND REPORTED BY:

**Institutional Planning, Research and Grants**

Chippewa Valley Technical College

Business Education Center

620 W Clairemont Ave. // Eau Claire, WI 54701

CHIPPEWA VALLEY  
TECHNICAL COLLEGE

# CAREER OUTCOMES

2022-2023 GRADUATES

A photograph of three young women with long hair, smiling and talking to each other. They are wearing name tags. The background shows a graduation event with other people and yellow balloons.

94%

94% of CVTC graduates are employed within 6 months to a year after graduation.

85% of these graduates are employed in a field related to their training.

85%

# FAST FACTS

94%

EMPLOYED

1,508

RESPONDENTS

85%

EMPLOYED IN A RELATED FIELD

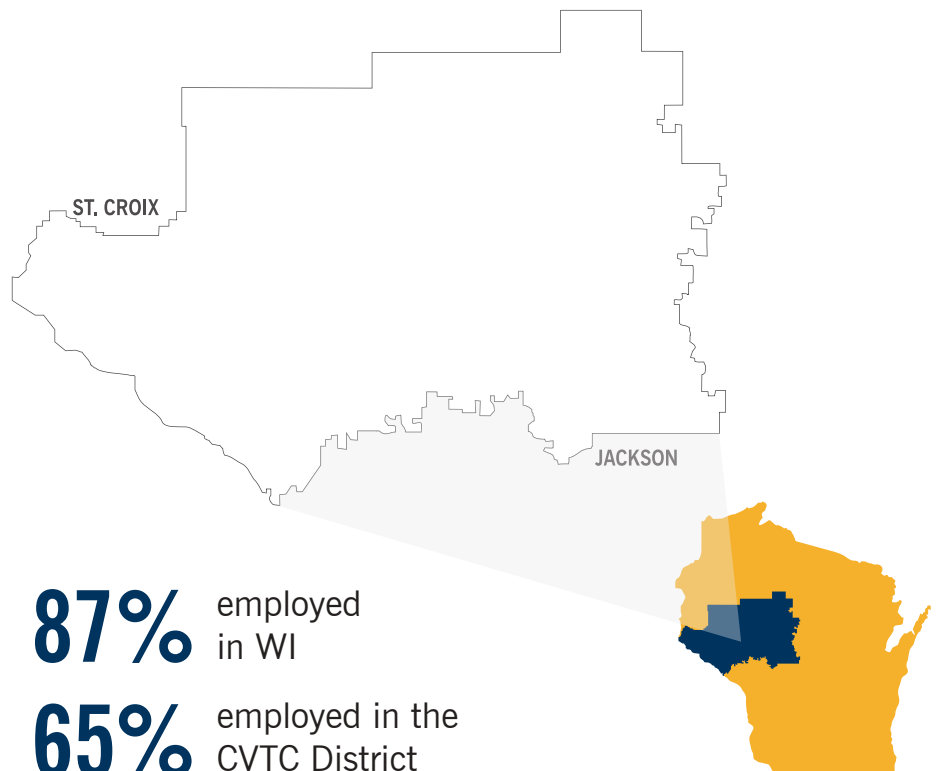
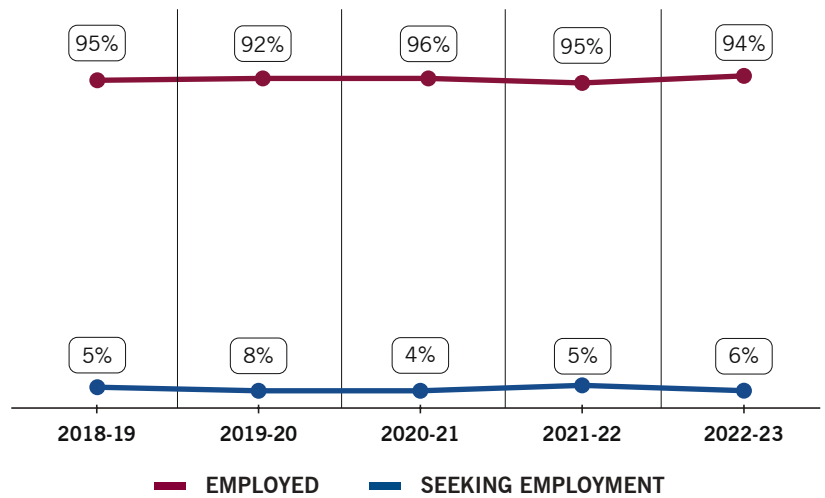
67%

RESPONSE RATE

## AVERAGE ANNUAL WAGES BY DEGREE TYPE



## GRADUATE EMPLOYMENT TRENDS



# 2022-23 TOTALS

Total graduates surveyed	2,247
Total graduates responding	1,508
Graduates available for employment	734
Graduates employed	693
Graduates employed in a related field	585
Graduates continuing education	750
Graduates seeking employment	41
Graduates employed in WI	537
Graduates employed in CVTC's district	401



## EMPLOYMENT SUMMARY DETAILS

### Total Graduates

Total number of students graduating from CVTC in August 2022, December 2022, or May 2023.

### Total Graduates Responding

Total graduates completing the survey via online, paper, or phone, or currently enrolled in another CVTC program.

### Graduates Available for Employment

Graduates reporting that they are employed (related or unrelated) or seeking employment.

### Graduates Employed

Graduates available for employment, reporting that they are employed (related or unrelated).

### Graduates Employed in a Related Field

Graduates employed, reporting that they are employed in a field related to their program of study.

### Graduates Continuing Education

Graduates who are continuing their education at CVTC or another college

### Graduates Seeking Employment

Graduates available for employment, reporting that they are seeking employment.

### Graduates Employed in WI

Graduates employed, reporting that they are employed in Wisconsin.

### Graduates Employed in CVTC's District

Graduates employed, reporting that they are employed in Buffalo, Chippewa, Clark, Dunn, Eau Claire, Jackson, Pepin, Pierce, St. Croix, Taylor, or Trempeleau counties.

### Average Wage Calculation

The 2-year average of salaries reported of graduates (2021-22 and 2022-23) employed in a related field, working 30+ hours per week. To keep wage information confidential, wages are only reported if five or more graduates provided full-time (30+ hours for the purpose of the report), training-related wages.

### Survey Methodology

The survey population is comprised of students who graduated during the 2022-23 academic year (August 2022, December 2022, and May 2023). Surveys are sent in the mail, via email, and phone calls are made to non-responders. Responses from the 2022-23 graduates were gathered via Qualtrics survey software and analyzed by the Institutional Planning, Research and Grants office. A total of 1,508 responses were received, an overall response rate of 67%.

# AGRICULTURE, FOOD & NATURAL RESOURCES



	GRADUATES	RESPONSE RATE	CONTINUING EDUCATION	SEEKING	EMPLOYED	EMPLOYED RELATED	2-YR AVG HOURLY	2-YR AVG ANNUAL
Agronomy Management	11	82%	11%	0%	100%	75%	\$21.54	\$46,633
Animal Science Management	14	71%	30%	14%	86%	100%	\$19.40	\$41,920
Farm Business & Production Management	5	40%	0%	0%	100%	100%	*	*
Landscape, Plant & Turf Management	10	40%	0%	25%	75%	67%	*	*
Landscape, Plant & Turf Technician	1	100%	100%				*	*
Livestock Technician	12	100%	92%	0%	100%	100%	*	*

*\*Information not provided due to less than 5 reported wages. Wages reported are a 2-yr. average from 2021-22 & 2022-23 graduates working 30+ hrs. a week and employed in a related field.*

# ARCHITECTURE & CONSTRUCTION



	GRADUATES	RESPONSE RATE	CONTINUING EDUCATION	SEEKING	EMPLOYED	EMPLOYED RELATED	2-YR AVG HOURLY	2-YR AVG ANNUAL
Air Conditioning, Heating & Refrigeration (HVAC)	11	45%	0%	0%	100%	100%	\$23.16	\$49,792
Air Conditioning, Heating & Refrigeration (HVAC) Technician	46	65%	60%	8%	92%	100%	\$21.78	\$47,259
Architectural Structural Design	7	86%	0%	0%	100%	100%	\$23.56	\$49,452
Electrical Power Distribution	30	83%	12%	0%	100%	81%	\$28.52	\$65,803
Gas Utility, Construction, & Service	10	100%	0%	0%	100%	100%	\$29.04	\$60,605
Renewable Energy	1	100%	0%	0%	100%	100%	*	*
Residential Construction	21	86%	6%	6%	94%	100%	\$25.11	\$46,107
Residential Construction Management	2	100%	0%	0%	100%	50%	*	*

\*Information not provided due to less than 5 reported wages. Wages reported are a 2-yr. average from 2021-22 & 2022-23 graduates working 30+ hrs. a week and employed in a related field.

# BUSINESS, FINANCE, HOSPITALITY & MARKETING



	GRADUATES	RESPONSE RATE	CONTINUING EDUCATION	SEEKING	EMPLOYED	EMPLOYED RELATED	2-YR AVG HOURLY	2-YR AVG ANNUAL
Accounting	24	63%	33%	10%	90%	78%	\$20.35	\$41,991
Accounting Assistant	12	92%	73%	0%	100%	100%	\$21.93	\$44,563
Administrative Professional	7	86%	0%	0%	100%	83%	\$18.94	\$37,593
Baking and Pastry Specialist	8	75%	17%	0%	100%	40%	*	*
Bookkeeper	44	68%	87%	0%	100%	25%	\$20.90	\$42,950
Business Generalist	115	88%	88%	8%	92%	82%	\$26.24	\$56,087
Business Management	88	58%	31%	9%	91%	78%	\$22.10	\$47,263
Culinary Management	2	0%					*	*
Culinary Production Specialist	6	83%	40%	0%	100%	100%	*	*

*\*Information not provided due to less than 5 reported wages. Wages reported are a 2-yr. average from 2021-22 & 2022-23 graduates working 30+ hrs. a week and employed in a related field.*

## BUSINESS, FINANCE, HOSPITALITY & MARKETING (CONT.)



	GRADUATES	RESPONSE RATE	CONTINUING EDUCATION	SEEKING	EMPLOYED	EMPLOYED RELATED	2-YR AVG HOURLY	2-YR AVG ANNUAL
Digital Marketing	12	58%	14%	17%	83%	80%	\$25.03	\$49,574
Entrepreneurship	8	25%	50%	0%	100%	100%	*	*
Graphic Design	28	57%	13%	29%	71%	40%	*	*
Human Resources	18	50%	11%	0%	100%	43%	\$24.16	\$50,285
Individualized Technical Studies	2	50%	0%	0%	100%	0%	*	*
Marketing	6	0%					*	*
Office Assistant	7	29%	100%				*	*
Office Receptionist	7	57%	75%	0%	100%	100%	*	*
Professional Communications	6	33%	50%	0%	100%	100%	*	*
Sales & Marketing Specialist	12	92%	100%				*	*

\*Information not provided due to less than 5 reported wages. Wages reported are a 2-yr. average from 2021-22 & 2022-23 graduates working 30+ hrs. a week and employed in a related field.



# HEALTH SCIENCES



	GRADUATES	RESPONSE RATE	CONTINUING EDUCATION	SEEKING	EMPLOYED	EMPLOYED RELATED	2-YR AVG HOURLY	2-YR AVG ANNUAL
Central Service Technician	5	60%	33%	0%	100%	100%	\$17.55	\$33,417
Dental Assistant	19	84%	19%	0%	100%	92%	\$19.56	\$35,487
Dental Hygienist	14	71%	0%	10%	90%	89%	\$37.43	\$65,218
Diagnostic Medical Sonography	15	67%	0%	0%	100%	100%	\$34.86	\$67,474
Health Information Management & Technology	9	100%	0%	0%	100%	67%	\$21.11	\$43,969
Health Navigator	5	60%	33%	0%	100%	50%	*	*
Medical Assistant	35	66%	61%	0%	100%	100%	\$18.44	\$36,291
Medical Coder	8	100%	38%	0%	100%	60%	*	*
Medical Laboratory Technician	13	77%	10%	11%	89%	100%	\$23.40	\$46,302
Nursing	165	51%	15%	0%	100%	97%	\$35.31	\$63,612

*\*Information not provided due to less than 5 reported wages. Wages reported are a 2-yr. average from 2021-22 & 2022-23 graduates working 30+ hrs. a week and employed in a related field.*

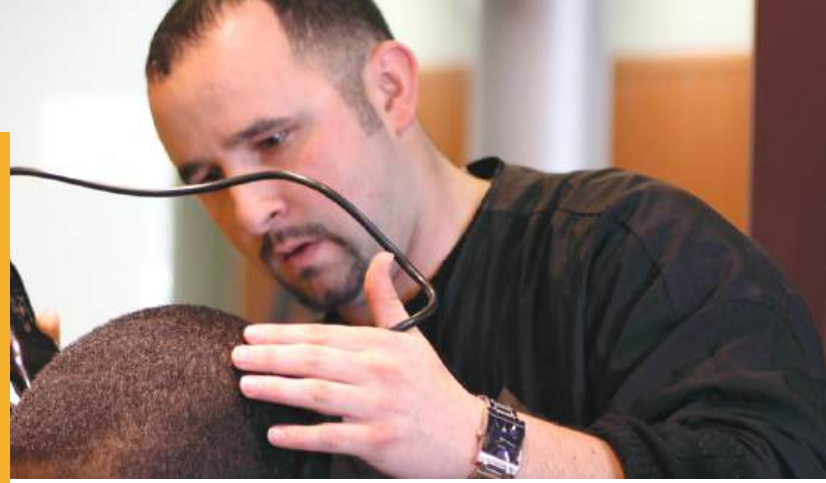
## HEALTH SCIENCES (CONT.)



	GRADUATES	RESPONSE RATE	CONTINUING EDUCATION	SEEKING	EMPLOYED	EMPLOYED RELATED	2-YR AVG HOURLY	2-YR AVG ANNUAL
Nursing Assistant	354	68%	74%	15%	85%	73%	\$18.85	\$36,852
Patient Service Specialist	1	100%	100%				*	*
Physical Therapist Assistant	9	67%	0%	17%	83%	80%	\$24.03	\$46,758
Practical Nursing (LPN)	149	94%	91%	0%	100%	92%	\$29.76	\$56,266
Radiography	15	100%	0%	0%	100%	100%	\$30.34	\$52,915
Respiratory Therapy	7	71%	0%	0%	100%	100%	\$35.13	\$67,896
Substance Use Disorder Counseling	10	20%	0%	0%	100%	100%	\$22.85	\$45,179
Surgical Technologist	14	71%	0%	0%	100%	90%	\$26.12	\$49,012

\*Information not provided due to less than 5 reported wages. Wages reported are a 2-yr. average from 2021-22 & 2022-23 graduates working 30+ hrs. a week and employed in a related field.

# HUMAN SERVICES & EDUCATION



	GRADUATES	RESPONSE RATE	CONTINUING EDUCATION	SEEKING	EMPLOYED	EMPLOYED RELATED	2-YR AVG HOURLY	2-YR AVG ANNUAL
Autism Assistant	4	50%	100%				*	*
Child Care Services	14	86%	58%	0%	100%	100%	*	*
Cosmetology	24	42%	10%	0%	100%	100%	\$15.09	\$29,085
Early Childhood Education	19	58%	27%	0%	100%	88%	\$15.32	\$29,358
Foundations of Teacher Education	11	73%	13%	14%	86%	100%	\$18.10	\$31,127
Library & Information Services	7	86%	0%	0%	100%	83%	\$19.37	\$36,107
Nail Technician	15	40%	17%	0%	100%	75%	*	*

*\*Information not provided due to less than 5 reported wages. Wages reported are a 2-yr. average from 2021-22 & 2022-23 graduates working 30+ hrs. a week and employed in a related field.*

# INFORMATION TECHNOLOGY



	GRADUATES	RESPONSE RATE	CONTINUING EDUCATION	SEEKING	EMPLOYED	EMPLOYED RELATED	2-YR AVG HOURLY	2-YR AVG ANNUAL
IT - Network Specialist	30	50%	7%	14%	86%	75%	\$23.60	\$48,260
IT - Software Developer	45	40%	33%	18%	82%	44%	\$28.37	\$60,794
IT - Software Development Specialist	72	78%	89%	20%	80%	50%	*	*

*\*Information not provided due to less than 5 reported wages. Wages reported are a 2-yr. average from 2021-22 & 2022-23 graduates working 30+ hrs. a week and employed in a related field.*

# MANUFACTURING



	GRADUATES	RESPONSE RATE	CONTINUING EDUCATION	SEEKING	EMPLOYED	EMPLOYED RELATED	2-YR AVG HOURLY	2-YR AVG ANNUAL
Automation Engineering Technology	16	69%	9%	0%	100%	100%	\$30.12	\$67,991
Electrical Maintenance	19	68%	77%	0%	100%	67%	*	*
Electromechanical Maintenance Technician	8	88%	57%	0%	100%	100%	\$26.28	\$57,382
Machine Tool Operator	7	71%	80%	0%	100%	100%	*	*
Machine Tooling Technics	12	67%	0%	0%	100%	100%	\$23.51	\$51,331
Mechanical Maintenance	9	89%	88%	0%	100%	100%	*	*
Mechatronics Specialist	12	67%	0%	13%	88%	100%	\$31.94	\$70,899
Mechatronics Technician	9	67%	33%	0%	100%	75%	\$27.11	\$61,029
Technical Studies - Journeyworker	6	50%	0%	0%	100%	100%	*	*
Welding	34	53%	44%	0%	100%	90%	\$25.42	\$54,139
Welding Fabrication	2	50%	0%	0%	100%	100%	\$23.25	\$49,154

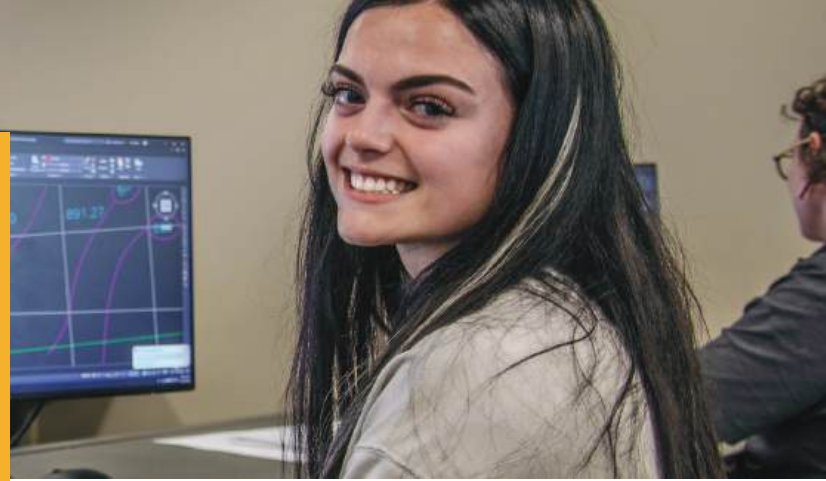
\*Information not provided due to less than 5 reported wages. Wages reported are a 2-yr. average from 2021-22 & 2022-23 graduates working 30+ hrs. a week and employed in a related field.

# PUBLIC SAFETY, LAW, CORRECTIONS & SECURITY

	GRADUATES	RESPONSE RATE	CONTINUING EDUCATION	SEEKING	EMPLOYED	EMPLOYED RELATED	2-YR AVG HOURLY	2-YR AVG ANNUAL
Criminal Justice	33	73%	58%	10%	90%	89%	\$23.71	\$50,058
Criminal Justice - Law Enforcement Academy	59	49%	3%	4%	96%	93%	\$28.19	\$60,200
Emergency Medical Technician (EMT)	120	64%	61%	3%	97%	69%	\$19.32	\$39,909
FireMedic	4	25%	0%	0%	100%	100%	\$20.10	\$57,707
Legal Studies/Paralegal	7	86%	0%	17%	83%	80%	\$20.25	\$42,118
Legal Studies/Paralegal Post-Baccalaureate	2	100%	0%	0%	100%	100%	\$22.09	\$42,623
Paramedic	2	100%	0%	0%	100%	100%	*	*
Paramedic Technician	2	50%	0%	0%	100%	100%	\$26.92	\$58,573

*\*Information not provided due to less than 5 reported wages. Wages reported are a 2-yr. average from 2021-22 & 2022-23 graduates working 30+ hrs. a week and employed in a related field.*

# SCIENCE, TECHNOLOGY, ENGINEERING & MATHEMATICS



	GRADUATES	RESPONSE RATE	CONTINUING EDUCATION	SEEKING	EMPLOYED	EMPLOYED RELATED	2-YR AVG HOURLY	2-YR AVG ANNUAL
Design & Drafting Technology	15	93%	93%	100%	0%		*	*
Manufacturing Engineering Technologist	7	57%	25%	0%	100%	100%	\$27.32	\$59,259
Manufacturing Quality	3	100%	33%	0%	100%	100%	*	*
Mechanical CAD Operator	7	86%	0%				*	*
Mechanical Design Technology	6	83%	0%	0%	100%	100%	\$28.47	\$59,777

*\*Information not provided due to less than 5 reported wages. Wages reported are a 2-yr. average from 2021-22 & 2022-23 graduates working 30+ hrs. a week and employed in a related field.*

# TRANSPORTATION, DISTRIBUTION & LOGISTICS



	GRADUATES	RESPONSE RATE	CONTINUING EDUCATION	SEEKING	EMPLOYED	EMPLOYED RELATED	2-YR AVG HOURLY	2-YR AVG ANNUAL
Auto Collision Repair & Refinish Technician	10	60%	0%	0%	100%	83%	\$21.17	\$47,480
Automotive Maintenance Technician	8	75%	33%	0%	100%	100%	*	*
Automotive Technician	10	60%	0%	0%	100%	83%	*	*
Diesel Truck Technician	15	93%	0%	0%	100%	93%	\$23.08	\$46,042
Motorcycle, Marine & Outdoor Power Products Technician	6	83%	0%	20%	80%	75%	\$20.72	\$41,136
Supply Chain Management	10	60%	0%	0%	100%	83%	\$26.62	\$60,991
Truck Driving	64	41%	12%	0%	100%	82%	\$22.88	\$57,054

*\*Information not provided due to less than 5 reported wages. Wages reported are a 2-yr. average from 2021-22 & 2022-23 graduates working 30+ hrs. a week and employed in a related field.*



# UNIVERSITY TRANSFER



	GRADUATES	RESPONSE RATE	CONTINUING EDUCATION	SEEKING	EMPLOYED	EMPLOYED RELATED	2-YR AVG HOURLY	2-YR AVG ANNUAL
Associate of Arts - Liberal Arts	1	100%	0%	100%	0%		*	*
Associate of Science - Liberal Arts	30	53%	56%	17%	83%	20%	*	*

620

620 students were enrolled in the Associate of Science and Arts Transfer programs in 2022-23. Many of these students will transfer to four-year institutions prior to graduating, which is the ultimate goal.

20%

20% of students who started the Associate of Science and Arts Transfer programs in 2021-22 transferred to a four-year institution the following year. Top institutions these students transferred to:

**UW-Eau Claire (43%)**

**UW-Stout (12%)**

*\*Information not provided due to less than 5 reported wages. Wages reported are a 2-yr. average from 2021-22 & 2022-23 graduates working 30+ hrs. a week and employed in a related field.*

# EMPLOYERS HIRING 2022-23 GRADUATES

## ACCOUNTING

- Advanced Laser
- Lippert
- Nels Gunderson Chevrolet
- Royal Credit Union
- Tweet Garot

## ACCOUNTING ASSISTANT

- AmWest Inc.
- Citizens State Bank

## ADMINISTRATIVE PROFESSIONAL

- Markquart Motors
- University of Wisconsin-Stout

## AGRONOMY MANAGEMENT

- Northside Elevator
- Peck Valley Dairy
- Seneca Foods
- Trinity Farms LLC

## AIR CONDITIONING, HEATING, & REFRIGERATION

- Commercial Plumbing and Heating
- Gustav A Larson
- Poolman
- United Refrigeration Inc.

## AIR CONDITIONING, HEATING, & REFRIGERATION TECHNICIAN

- Benedict Refrigeration
- Coolsys
- House of Heating
- Hovland's, Inc.
- Hurlburt Heating & Plumbing
- J.F. Ahern
- Joe's Refrigeration
- Kurth Heating and Cooling
- Malbrit Mechanical
- Next Step Energy

## ANIMAL SCIENCE MANAGEMENT

- Mondovi Veterinary Service
- Trinity Farms LLC

## ARCHITECTURAL STRUCTURAL DESIGN

- American Structural Metals
- BAA LLC
- Cedar Corporation
- City of Chippewa Falls
- DRL Drafting and Design
- Lynch Mykins Structural Engineers, PC

## AUTO COLLISION REPAIR & REFINISH TECHNICIAN

- Caliber Collision
- Eau Galle Body Shop
- Markquart Motors
- Trubilt

## AUTOMATION ENGINEERING TECHNOLOGY

- Andersen Corporation
- Bush Brothers & Company
- BW Papersystems
- Catalytic Combustion Corporation
- Custom Fabricating and Repair
- Japs Olson Company
- McMillan Electric Company
- Menards Distribution Center
- Skillwork

## AUTOMOTIVE MAINTENANCE TECHNICIAN

- Chippewa Valley Mazda
- D's Auto Repair
- Wisconsin Army National Guard

## AUTOMOTIVE TECHNICIAN

- Chippewa Valley Mazda
- One Automotive Group

## BAKING AND PASTRY SPECIALIST

- Sam's Club

## BOOKKEEPER

- Pinehurst Foods

## BUSINESS GENERALIST

- Chippewa Valley Habitat for Humanity
- Kaufhold's Kurds
- Optum Services
- Treasure Island Resort and Casino
- U.S. Bank

## BUSINESS MANAGEMENT

- AdventHealth
- Anagram International
- Ashley Furniture
- Drylock Technologies
- Kaufhold's Kurds
- Menards
- Monarch Paving
- Motion Industries
- National Business Institute
- Pierce Pepin Cooperative Services
- Regal Property Manager
- Scheels
- Sunshine Fitness
- Tractor Central
- W.B. Manufacturing

## CENTRAL SERVICE TECHNICIAN

- Mayo Clinic Health System

## CHILD CARE SERVICES

- Head Start

## COSMETOLOGY

- Great Clips
- Primitive Parlor
- Razor Edge
- The Barbershop
- Urban Style

## CRIMINAL JUSTICE

- Allied Universal Security Services
- Janesville Police Dept.
- New Richmond Police Dept.
- Per Mar Security Services
- St. Croix County Sheriff's Office

# EMPLOYERS HIRING 2022-23 GRADUATES

## CRIMINAL JUSTICE-LAW ENFORCEMENT ACADEMY

- Barron Police Dept.
- Boyceville Police Dept.
- Chippewa Falls Police Dept.
- City of Eau Claire
- Durand Police Dept.
- Eau Claire Police Dept.
- Hudson Police
- Kronenewetter Police Dept.
- Lincoln Hills
- Rice Lake Police Dept.
- Shell Lake Police Dept.
- Somerset Police Dept.
- St. Croix County Sheriff's Office
- Stanley-Boyd Police Dept.
- Village of North Hudson

## CULINARY PRODUCTION SPECIALIST

- Chippewa Valley Technical College

## DENTAL ASSISTANT

- Ashley Dental
- Bullis Pond Dental
- Kristo Orthodontics
- Maple Ridge Dental
- OakPark Dental
- Regis Court Dental Associates

## DENTAL HYGIENIST

- Arrowhead Family Dental
- Gentle Dental
- Menomonie Street Dental
- Midwest Dental Oakwood

## DIAGNOSTIC MEDICAL SONOGRAPHY

- Aspirus Hospital
- Essentia Health
- Lakeview Hospital
- Mankato Clinic
- Marshfield Clinic Health System
- Mayo Clinic Health System

## DIESEL TRUCK TECHNICIAN

- Allstate Peterbilt
- H & S Excavating
- Johnson Tractor
- K & S Logistics & Carriers
- Marten Transport
- Meyer International Trucks
- Northwest Truck Service
- Penske Truck Leasing
- Rands Trucking Inc.
- River States Truck & Trailer
- Wisconsin Kenworth

## DIGITAL MARKETING

- Boston FAM
- Hookd Promotions
- Mason Companies

## EARLY CHILDHOOD EDUCATION

- Chippewa Falls School District
- Granton Community Childcare Center
- Hand in Hand
- Sunshine Learning Center
- Tiffany Creek Elementary

## ELECTRICAL POWER DISTRIBUTION

- A-1 Power
- Black & McDonald
- Hooper
- Jackson Electric Cooperative
- Lake States Construction
- M. J. Electric
- Michels Power
- Olameter
- Push, Inc.
- St. Croix Electric
- Tjader & Highstrom
- Xcel Energy
- Zielies Tree Service

## ELECTROMECHANICAL MAINTENANCE TECHNICIAN

- Indue Sales & Service
- McMillan Electric Company
- Ornuu Ingredients

## EMERGENCY MEDICAL TECHNICIAN

- Allina Health
- Altoona Fire Department
- Arcadia
- Baldwin EMS
- Clearwater Assisted Living
- Dunn County
- Ellsworth Area Ambulance Service
- HSHS Sacred Heart Hospital
- Mayo Clinic Health System
- North Memorial Ambulance Services

## ENTREPRENEURSHIP

- St. Croix Chocolate Co.

## FIREMEDIC

- Stevens Point Fire Department

## FOUNDATIONS OF TEACHER EDUCATION

- Barron Area School District
- Eau Claire Area School District
- School District of Menomonie
- St. Mary's Catholic School

## GAS UTILITY CONSTRUCTION & SERVICE

- Q3 Contracting
- Tilson Technology
- We Energies
- Xcel Energy

## GRAPHIC DESIGN

- Rice Lake Printery
- River City Stitch

## HEALTH INFORMATION MANAGEMENT & TECHNOLOGY

- Mayo Clinic Health System
- OakLeaf Clinics
- Park Nicollet Health Services
- Prevea Health

## HUMAN RESOURCES

- Blue Diamond Proppants
- Menards

## IT - NETWORK SPECIALIST

- Ag Partners
- Andersen Corporation
- Ellsworth Cooperative Creamery
- IDEX
- Jackson Electric Cooperative
- Menards
- Northwood Technical College
- WIN Technology

## IT - SOFTWARE DEVELOPMENT SPECIALIST

- Documation

## IT - SOFTWARE DEVELOPER

- Group Health Cooperative
- MenuMetric
- Poms Tire

## LANDSCAPE, PLANT, & TURF MANAGEMENT

- Lyngblomsten
- Weller Brothers

# EMPLOYERS HIRING 2022-23 GRADUATES

## LEGAL STUDIES/PARALEGAL

- Bakke Norman, S. C.
- CORRE, Inc.
- Eau Claire County
- Otto Family Law, S.D.

## LEGAL STUDIES/PARALEGAL POST-BACCALAUREATE

- Mayo Clinic Health System
- Wisconsin Office of the Public Defender

## LIBRARY & INFORMATION SERVICES

- Chippewa Falls Public Library
- City of Rice Lake Library
- Elk Mound School District
- Oshkosh Area School District

## LIVESTOCK TECHNICIAN

- Central Star Cooperative

## MACHINE TOOL OPERATOR

- Michaud Machining

## MACHINE TOOLING TECHNICS

- Baxter Engines
- MRS Machining
- Procise
- Rapid Machining
- Vincent Tool Technologies
- W.S. Darley & Co.

## MANUFACTURING ENGINEERING TECHNOLOGIST

- Nova Fire Protection
- Riverside Machine and Engineering

## MANUFACTURING QUALITY

- Phillips-Medisize
- Riverside Machine and Engineering

## MECHANICAL DESIGN TECHNOLOGY

- D&S Manufacturing
- Spare Time Entertainment
- State of Wisconsin
- Tree Island Steel
- WB Manufacturing

## MECHANICAL MAINTENANCE

- Riverside Machine and Engineering

## MECHATRONICS SPECIALIST

- 3M
- American Phoenix Inc.
- Midwest Manufacturing
- Nestle Health Science
- Perrigo
- Saputo Cheese USA

## MECHATRONICS TECHNICIAN

- Mayo Clinic Health System
- Tenneco
- University of Wisconsin-Eau Claire

## MEDICAL ASSISTANT

- Marshfield Clinic Health System
- Mayo Clinic Health System
- OakLeaf Clinics
- OakLeaf Pediatrics

## MEDICAL CODER

- OakLeaf Clinics

## MEDICAL LABORATORY TECHNICIAN

- HSHS Sacred Heart Hospital
- Krohn Clinic
- Lee Health
- Mayo Clinic Health System
- Spooner Health

## MOTORCYCLE, MARINE & OUTDOOR POWER PRODUCTS TECHNICIAN

- Bush Motorsports
- Harbortown Harley Davidson
- Nextgen Powersports

## NURSING ASSISTANT

- Augusta Health and Rehab
- Fraser
- Heritage Assisted Living
- HSHS Sacred Heart Hospital
- Hudson Physicians
- Interim HealthCare
- Mayo Clinic Health System
- Meadowbrook
- Western Wisconsin Health

## NURSING - ASSOCIATE DEGREE

- Abbot Northwestern Hospital
- Acadia Healthcare
- Allina Health
- Aspirus
- Black River Memorial Hospital
- Carle Bromenn Medical Center
- Carteret Health Care
- Cincinnati Children's Hospital
- Clark County Rehabilitation & Living Center
- HealthPartners
- HSHS Sacred Heart Hospital
- Hudson Hospital
- Huntington Beach Hospital
- Interim HealthCare
- Lakeview Hospital
- Liberty Regional Medical Center
- M Health Fairview Woodwinds Hospital
- Marshfield Clinic Health System
- Mayo Clinic Health System
- Minnesota Department of Corrections
- Osceola Medical Center
- Plum City Care Center
- Regions Hospital
- Stillwater Area School District
- Tamarack Health Ashland Medical Center
- TEAM Wellness Corporation

## PARAMEDIC

- Eau Claire Fire Department

## PARAMEDIC TECHNICIAN

- Mayo Clinic Health System

## PHYSICAL THERAPIST ASSISTANT

- Broad River Rehab
- Dove Healthcare
- Interim HealthCare
- PT Solutions

## PRACTICAL NURSING

- Baldwin Care Center
- Cambridge Senior Living
- Interim HealthCare
- Mayo Clinic Health System

# EMPLOYERS HIRING 2022-23 GRADUATES

## PROFESSIONAL COMMUNICATIONS

- Chippewa County

## RADIOGRAPHY

- HSHS Sacred Heart Hospital
- HSHS St Joseph's Hospital
- M Health Fairview
- Marshfield Clinic Health System
- Marshfield Medical Center
- Mayo Clinic Health System
- McBride Orthopedic Hospital
- Tamarack Hayward Area Memorial Hospital

## RESIDENTIAL CONSTRUCTION

- Anderson Construction
- B & S Remodeling
- Brooks Home Renovations
- C&E Wurzer Builders
- City of Tuscaloosa
- Garage for Geeks
- Kulesa Construction
- Lindus
- Market and Johnson
- Nelson Home Repair
- Norhart
- PCI Roads
- Sandvig Construction

## RESPIRATORY THERAPY

- Dove Healthcare - Regional Vent Center
- Mayo Clinic Health System
- Regions Hospital

## SUBSTANCE USE DISORDER COUNSELING

- Lutheran Social Services
- St. Croix Correctional Center

## SUPPLY CHAIN MANAGEMENT

- Blattner Energy
- Can-Am Integrations
- Red Flint Group LLC
- WOW Logistics

## SURGICAL TECHNOLOGIST

- Children's Minnesota
- Marshfield Clinic Health System
- Mayo Clinic Health System
- OakLeaf Surgical Hospital
- Western Wisconsin Health
- Westfields Hospital

## TECHNICAL STUDIES - JOURNEYWORKER

- Municipal Electric Utilities of Wisconsin
- WPPI ENERGY

## TRUCK DRIVING

- American Materials
- Dirt Brothers Excavating LLC
- G & S Trucking
- Home City Ice
- INT - Galloway
- J Bauer Trucking
- JK Sterry Services LLC
- Johnson Hill Customs
- Kannel Trucking LLC
- Myren's Trucking LLC
- Prochnow Transport
- Q3 Contracting
- River City Transport
- TMC Transportation

## WELDING

- Advanced Laser
- GFL Environmental Inc.
- Kraemer North America
- K-TEK Corporation WI
- Local 512 Ironworkers Union
- Wisconsin Metal Fab

## WELDING FABRICATION

- Menards Distribution Center



# JOB TITLES OF 2022-23 GRADUATES

## ACCOUNTING

- Accounting Assistant
- Accounts Payable
- Accounts Receivable
- Member Account Representative
- Project Coordinator

## ACCOUNTING ASSISTANT

- Assistant Bookkeeper
- Customer Service Representative

## ADMINISTRATIVE PROFESSIONAL

- Administrative Assistant
- Concierge
- Office Administrator

## AGRONOMY MANAGEMENT

- Ag Field Supervisor
- Agronomy Grain Operations
- Farmer

## ANIMAL SCIENCE MANAGEMENT

- Farm Hand
- Service and Production Manager
- Veterinary Assistant

## AIR CONDITIONING, HEATING, & REFRIGERATION

- HVAC Service Technician
- Service Technician
- Territory Manager

## AIR CONDITIONING, HEATING, & REFRIGERATION TECHNICIAN

- ACE VAC/Solar Installer
- HVAC Installer
- HVAC Technician
- Refrigeration Service Technician
- Residential HVAC Technician
- Service Sales Intern

## ARCHITECTURAL STRUCTURAL DESIGN

- Architectural Drafter
- BIM Technician
- Drafter
- Engineering Technician
- Steel Detailer
- Structural Technician

## AUTO COLLISION REPAIR & REFINISH TECHNICIAN

- Autobody Collision Technician
- Autobody Technician
- Body Technician
- Metal Technician

## AUTOMATION ENGINEERING TECHNOLOGY

- Automation Specialist
- Automation Technician
- Contract Electrical Technician
- Electrical Designer
- Electro/Mechanical Tech
- Field Service Technician
- Maintenance Technician
- Project Engineer

## AUTOMOTIVE MAINTENANCE TECHNICIAN

- Auto Technician
- Lube Technician
- Surface Maintenance Repairer

## AUTOMOTIVE TECHNICIAN

- Nissan Technician
- Technician

## BAKING AND PASTRY SPECIALIST

- Baker/Packager

## BOOKKEEPER

- Manager

## BUSINESS GENERALIST

- Client Relationship Consultant
- Laborer
- Slot Shift Manager
- Store Manager

## BUSINESS MANAGEMENT

- Account Manager
- Business Support Specialist
- Consumer Access Specialist
- Customer Service Specialist
- Inside Sales
- Manager of Operations
- Member Relations
- Office Manager
- Production Worker
- Property Manager
- Retail Business Analyst
- Specialty Shop Manager

## CENTRAL SERVICE TECHNICIAN

- Central Service Technician

## CHILD CARE SERVICES

- Teacher Assistant

## COSMETOLOGY

- Barber
- Cosmetologist
- Hair Stylist

## CRIMINAL JUSTICE

- Deputy Sheriff
- Nuclear Security
- Patrol Officer
- Security Officer

## CRIMINAL JUSTICE-LAW ENFORCEMENT ACADEMY

- Correctional Officer
- Lieutenant
- Patrol Officer
- Police Officer

## CULINARY PRODUCTION SPECIALIST

- Teaching Fellow

## DENTAL ASSISTANT

- Dental Assistant
- Orthodontic Assistant

## DENTAL HYGIENIST

- Dental Hygienist

## DIAGNOSTIC MEDICAL SONOGRAPHY

- Diagnostic Medical Sonographer
- Sonographer
- Ultrasonographer
- Ultrasound Technician
- Vascular Sonographer

## DIESEL TRUCK TECHNICIAN

- Ag Technician
- Diesel Mechanic
- Diesel Technician
- Grease Monkey
- Technician

# JOB TITLES OF 2022-23 GRADUATES

## **DIGITAL MARKETING**

- Digital Marketing Expert
- Email Marketing Specialist
- Sales Professional

## **EARLY CHILDHOOD EDUCATION**

- Assistant Teacher
- Infant Teacher
- Special Education Paraprofessional
- Teacher

## **ELECTRICAL POWER DISTRIBUTION**

- CDL Power Groundman
- Equipment Operator
- Lead Meter Tech
- Lineman
- Operator 1
- Overhead Lineman
- Substation Technician
- Tree Trimmer
- Underground Worker
- Utility Helper

## **ELECTROMECHANICAL MAINTENANCE TECHNICIAN**

- Engineering Lab Technician
- Facility Maintenance Technician
- Maintenance

## **EMERGENCY MEDICAL TECHNICIAN**

- Certified Nursing Assistant
- Emergency Medical Technician
- Firefighter/EMT
- Phlebotomist
- Telecommunicator I

## **ENTREPRENEURSHIP**

- Chocolatier's Assistant

## **FIREMEDIC**

- Firefighter/Paramedic

## **FOUNDATIONS OF TEACHER EDUCATION**

- ESL 1st Grade Teacher
- Pre-K and K Teacher
- Special Education Para Educator

## **GAS UTILITY CONSTRUCTION & SERVICE**

- CDL Laborer
- Fuser
- Gas Inspector
- Unified Gas Helper
- Graphic Design

## **GRAPHIC DESIGN**

- Graphic Designer
- Screen Print Production Assistant

## **HEALTH INFORMATION MANAGEMENT & TECHNOLOGY**

- Coding Provider Specialist
- Documented Integrity Specialist
- HIM Specialist
- Medical Coder
- Patient Service Representative

## **HUMAN RESOURCES**

- Administrative Assistant
- Human Resources Manager

## **IT - NETWORK SPECIALIST**

- Hardware Support Tech
- IT Administrator
- IT Field Ops Technician Associate
- IT Support Technician
- IT-Network Specialist
- IT-Security Technician
- Network Analyst
- Network Systems Technician
- Technical Support Specialist

## **IT - SOFTWARE DEVELOPER**

- Reporting Developer
- Systems & Software Developer
- Technical Support

## **IT - SOFTWARE DEVELOPMENT SPECIALIST**

- IT Assistant
- Sales Executive

## **LANDSCAPE, PLANT, & TURF MANAGEMENT**

- Grounds Manager
- Horticulturist

## **LEGAL STUDIES/PARALEGAL**

- Judicial Assistant
- Legal Assistant
- Paralegal
- Real Estate Assistant

## **LEGAL STUDIES/PARALEGAL POST-BACCALAUREATE**

- Administrative Assistant
- Paralegal

## **LIBRARY & INFORMATION SERVICES**

- Circulation Assistant
- Information Services Coordinator
- Library Assistant
- Media Assistant

## **LIVESTOCK TECHNICIAN**

- Artificial Inseminations Technician

## **MACHINE TOOL OPERATOR**

- Machinist

## **MACHINE TOOLING TECHNICS**

- CNC Machinist
- Engine Machinist
- Machinist

## **MANUFACTURING ENGINEERING TECHNOLOGIST**

- CAD Designer
- Design Engineer
- Engineering Technician

## **MANUFACTURING QUALITY**

- First Article Inspector
- Quality Technician

## **MECHANICAL DESIGN TECHNOLOGY**

- Amusements Manager
- Analyst
- Data Platform Engineer
- Manufacturing Technician
- Mechanical Technologist

## **MECHANICAL MAINTENANCE**

- Maintenance Technician

# JOB TITLES OF 2022-23 GRADUATES

## **MECHATRONICS SPECIALIST**

- Associate Maintenance Planner
- Electrical Tech
- Industrial Maintenance Technician
- Industrial Mechanic
- PLC Technician
- Utilities Maintenance

## **MECHATRONICS TECHNICIAN**

- Electro Mechanic
- Facilities Specialist
- Power Plant Operator

## **MEDICAL ASSISTANT**

- Certified Medical Assistant
- Medical Assistant

## **MEDICAL CODER**

- Billing Rep

## **MEDICAL LABORATORY TECHNICIAN**

- Medical Laboratory Technician

## **MOTORCYCLE, MARINE & OUTDOOR POWER PRODUCTS TECHNICIAN**

- Powersports Technician
- Technician

## **NURSING ASSISTANT**

- Autism Entry Level
- Caregiver
- Certified Nursing Assistant
- Clinical Assistant
- Clinical Care Technician
- Hospice Certified Nursing Assistant
- Operations Director
- Sterilization Technician

## **NURSING - ASSOCIATE DEGREE**

- Healthcare Specialist
- Mental Health RN
- Nurse Technician
- Nursing Supervisor
- Registered Nurse
- Registered Nurse Case Manager

## **PARAMEDIC**

- Paramedic/Firefighter

## **PARAMEDIC TECHNICIAN**

- Paramedic

## **PHYSICAL THERAPIST ASSISTANT**

- Physical Therapist Assistant

## **PRACTICAL NURSING**

- Licensed Practical Nurse
- Regional Clinical Support

## **PROFESSIONAL COMMUNICATIONS**

- Contract Management/ Provider Relations

## **RADIOGRAPHY**

- Cardiovascular Invasive Lab Tech
- CT Technologist
- Magnetic Resonance Imaging Technologist
- Mammographer
- Multimodality Imaging Technologist
- Radiologic Technologist

## **RESIDENTIAL CONSTRUCTION**

- Carpenter
- Finish Carpenter
- General Laborer
- Owner
- Property Maintenance Inspector
- Shift Lead
- Siding Technician

## **RESIDENTIAL CONSTRUCTION MANAGEMENT**

- Project Manager

## **RESPIRATORY THERAPY**

- Respiratory Therapist

## **SUBSTANCE USE DISORDER COUNSELING**

- Substance Abuse Counselor
- Treatment Specialist

## **SUPPLY CHAIN MANAGEMENT**

- Buyer
- Operations Coordinator
- Purchaser
- Supply Chain Manager
- Technical Assistant Operations

## **SURGICAL TECHNOLOGIST**

- Certified Surgical Technologist
- Surgical Technologist

## **TECHNICAL STUDIES - JOURNEYWORKER**

- Job Training and Safety Instructor
- Journeyman Lineman

## **TRUCK DRIVING**

- CDL Bulk Milk Hauler Driver
- Dump Truck Driver
- Laborer
- Over-the-road Truck Driver
- Ready Mix Driver
- Truck Driver

## **WELDING**

- Ironworker
- Laborer
- Welder
- Welder/Carpenter
- Welder/Fabricator
- Welder/Operator

## **WELDING FABRICATION**

- Welder/Industrial Mechanic





CVTC does not discriminate on the basis of race, color, national origin, sex, disability, or age in employment, admissions, programs, or activities. General inquiries regarding the College's non-discrimination policies may be directed to: Director of Human Resources • Chippewa Valley Technical College • 620 W. Clairmont Ave. • Eau Claire, WI 54701 • 715-852-1377 • WI Relay: 711